



Plex: Computer Setup for Plex

Work Instructions For Installing the Web Browser Tools Necessary to Run Plex

Computer Setup for Plex

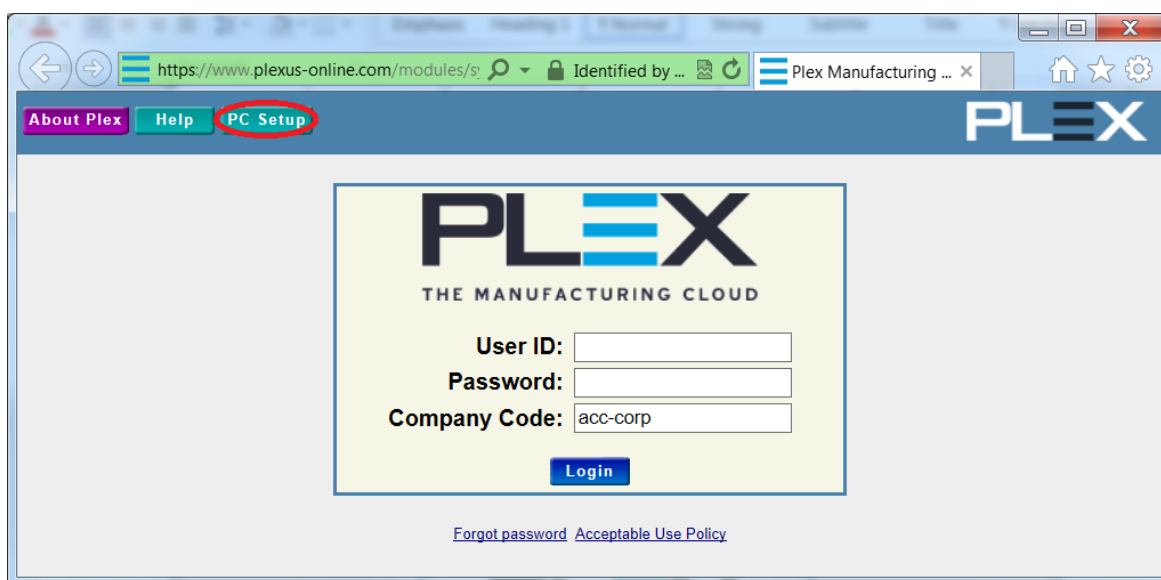
Instructions on Access and Use

This document will explain how a non-IT user can quickly and easily set up his or her computer to successfully launch Plex Manufacturing Cloud.

Running the Automatic PC Setup Tools

Plex ERP is a special kind of website called a **cloud application**, probably similar to your bank and possibly your e-mail websites. To launch Plex, simply go to: <https://www.plexonline.com/>.

Before Plex will let you log in, you must configure your web browser properly. If you are using Internet Explorer 9, 10, or 11, you can run the direct links below to install the configuration changes automatically. If you not able to use one of those Internet Explorer versions, you or your IT support must click the **PC Setup** button and follow the directions on that page manually.



DIRECT PC SETUP LINKS (IE9-11)

Web Browser Setup Tool (choose one)

- PC Setup for Windows 32-bit
http://plexussetup.plexus-online.com/Plex_Manufacturing_Cloud_x86_IE_Settings.msi
- PC Setup for Windows 64-bit
http://plexussetup.plexus-online.com/Plex_Manufacturing_Cloud_x64_IE_Settings.msi

Web Plug-in Setup Tool (choose one)

- Plug In for Shared Computers (requires privileged access to your own computer)
[http://plexussetup.plexus-online.com/BrowserPlugin\(Per-Machine\).msi](http://plexussetup.plexus-online.com/BrowserPlugin(Per-Machine).msi)
- Plug In for Personal Computers (any future user of your computer must also run this)
<http://plexussetup.plexus-online.com/BrowserPlugin.msi>

After installing the programs above, you are ready to use Plex. Refer to the Plex 101 document for assistance logging in.

Further Assistance

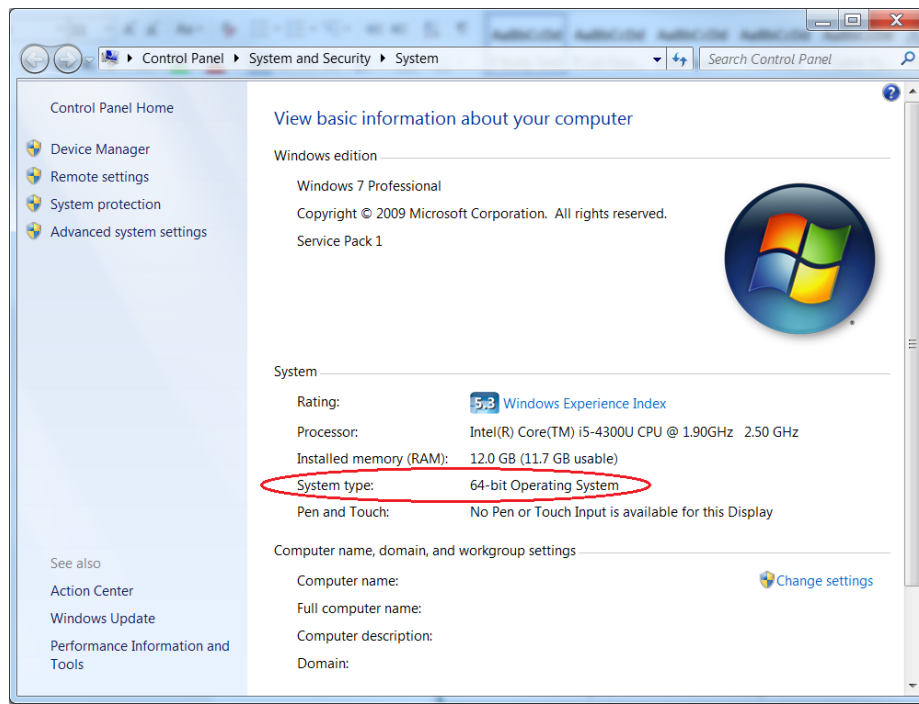
DETERMINING IF YOU ARE USING INTERNET EXPLORER 9, 10, OR 11

Open your web browser, which is the program you use to get to the Internet. When it opens, press Alt+H+A on your keyboard. If you are using Internet Explorer, a window will open showing you your version. I am using version 10:



DETERMINING IF YOUR COMPUTER IS 32 OR 64 BIT

Click your **Start** menu, right-click **Computer**, and then click **Properties**. A screen will appear showing your **System Type** as either 32-bit ('x86') or 64-bit ('x64').



If you see the **System Type** but it does not say 32-bit or 64-bit, your computer is likely 32-bit.